

Your LOGO

Your name area

1234 Main St, Nashua, NH 88888

Ph: (877) 999-3333

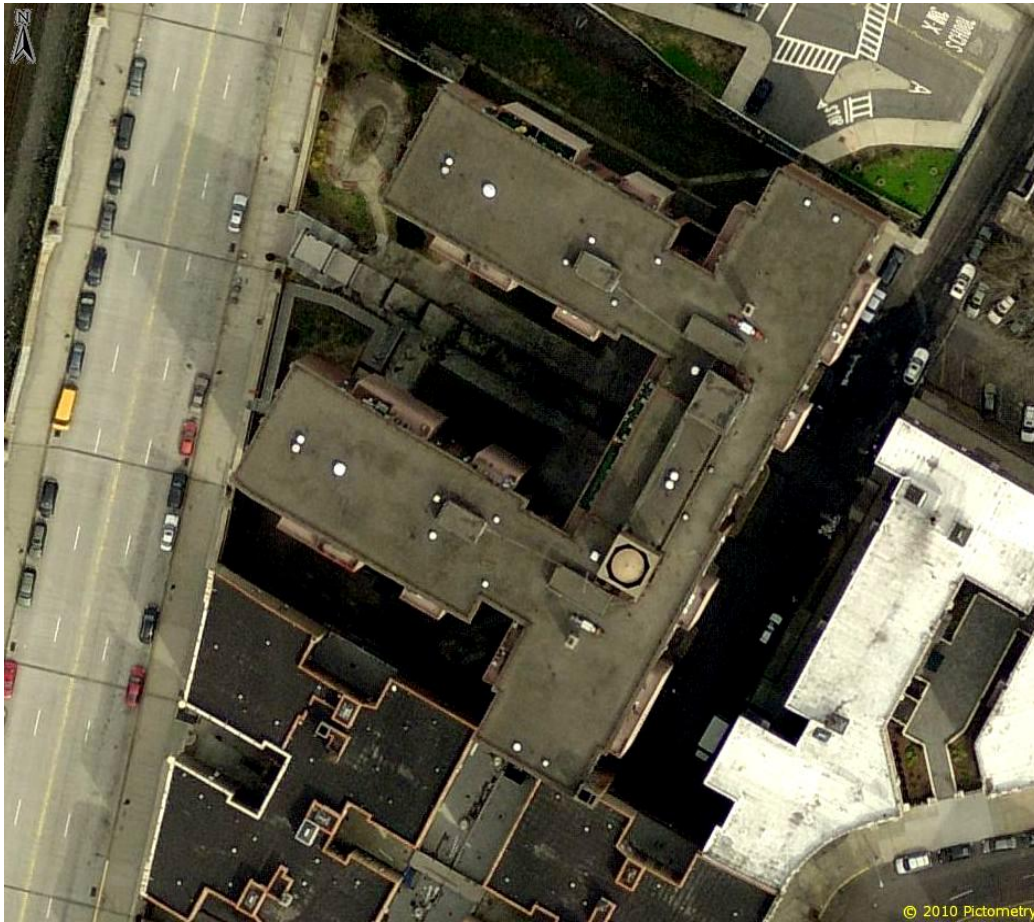
youremail@email.com

Roofing Report – Commercial

Order No.262

February 12, 2011

Customer Information: 888 North St., Customer City NH 76543



Length, Area and Pitch Summary

Total Area (Sqft)	32,983
Pitched Facet (Sqft)	0
Primary Pitch	0/12
Flat Facet (Sqft)	27,447
Parapet Area (Sqft)	5,536
Parapet Length (ft)	1,384
Parapet Height (ft)	1.50
Parapet Width (ft)	2.50
Ridges (ft)	0
Hips (ft)	0
Valleys (ft)	0
Rakes (ft)	0
Eaves (ft)	0
Rakes + Eaves (ft)	0
Apron Flashing (ft)	1,936
Step Flashing (ft)	0
Total Skylights	0
Total Chimneys	3

Property Identifiers

Longitude	-73.94827455282214
Latitude	40.83547833921442

Location Map:

<http://www.bing.com/maps/?v=2&where1=39%20Simon%20St%2C%20Nashua%2C%20NH%2003060-3046&q=39%20simon%20st%20nashua>



All information and content on this report are subject to applicable statutes and regulations, furnished "as is", without warranty of any kind, express or implied, including but not limited to implied warranties of merchantability, fitness for a particular purpose, or non-infringement. The contents of this report are protected by applicable copyright laws. No permission is granted to copy, distribute, modify, post or frame any text, graphics, or user interface design or logos.

Copyright © Aerialogics - All Rights Reserved. Patent Pending. Visit www.Aerialogics or call (877) 6-AERIAL

Your LOGO

Your name area

1234 Main St, Nashua, NH 88888

Ph: (877) 999-3333

youremail@email.com

Roofing Report – Commercial

Order No.262

February 12, 2011

Customer Information: 888 North St., Customer City NH 76543

Property Photos



North Side View



South Side View



All information and content on this report are subject to applicable statutes and regulations, furnished "as is", without warranty of any kind, express or implied, including but not limited to implied warranties of merchantability, fitness for a particular purpose, or non-infringement. The contents of this report are protected by applicable copyright laws. No permission is granted to copy, distribute, modify, post or frame any text, graphics, or user interface design or logos.

Your LOGO

Your name area

1234 Main St, Nashua, NH 88888

Ph: (877) 999-3333

youremail@email.com

Roofing Report – Commercial

Order No.262

February 12, 2011

Customer Information: 888 North St., Customer City NH 76543

Property Photos



East Side View



West Side View



All information and content on this report are subject to applicable statutes and regulations, furnished "as is", without warranty of any kind, express or implied, including but not limited to implied warranties of merchantability, fitness for a particular purpose, or non-infringement. The contents of this report are protected by applicable copyright laws. No permission is granted to copy, distribute, modify, post or frame any text, graphics, or user interface design or logos.



Your name area

1234 Main St, Nashua, NH 88888
Ph: (877) 999-3333
youremail@email.com

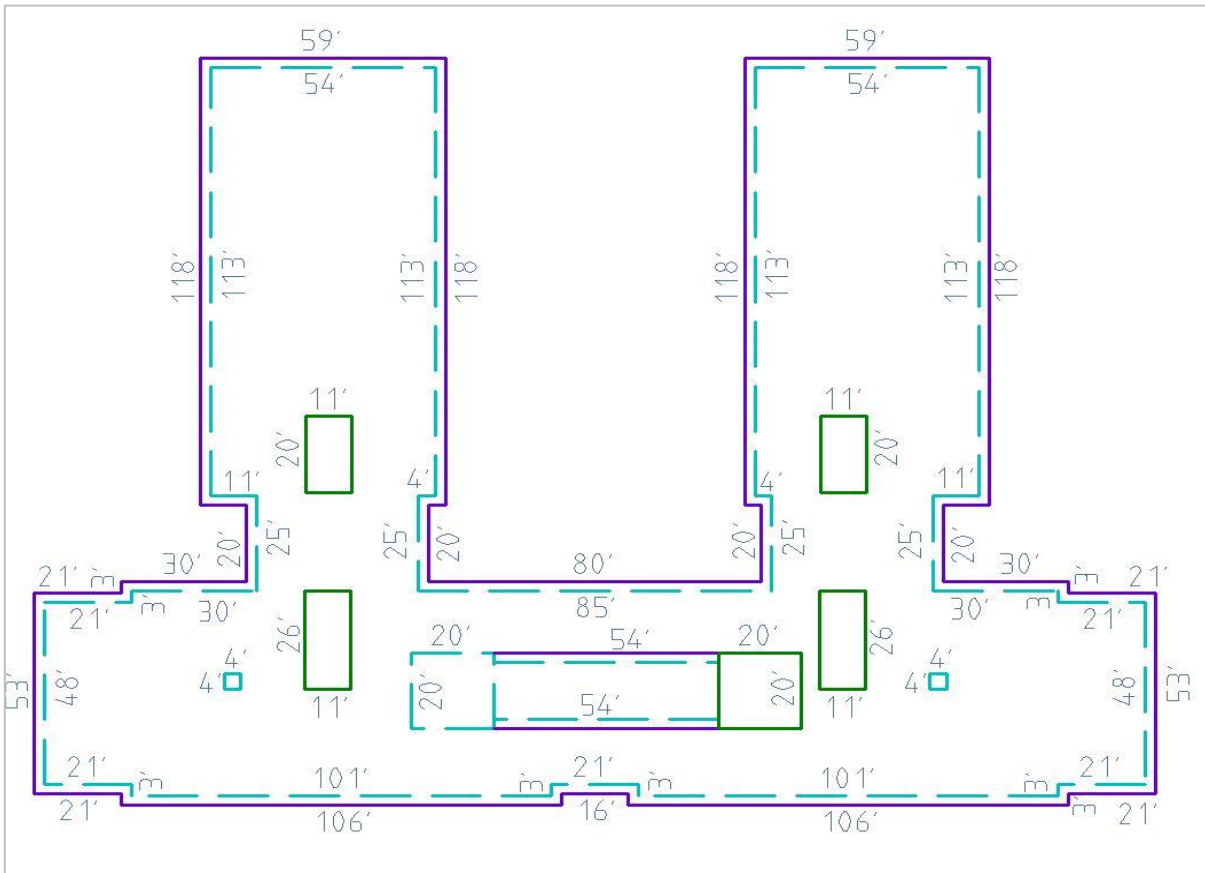
Roofing Report – Commercial

Order No.262

February 12, 2011

Customer Information: 888 North St., Customer City NH 76543

Length Plan



Legend

Ridges	0
Hips	0
Valleys	0
Rakes	0
Eaves	0
Apron Flashing	1,936
Step Flashing	0

Some Measurements have been removed from diagrams to improve readability. These measurements are reflected in the totals listed above.



All information and content on this report are subject to applicable statutes and regulations, furnished "as is", without warranty of any kind, express or implied, including but not limited to implied warranties of merchantability, fitness for a particular purpose, or non-infringement. The contents of this report are protected by applicable copyright laws. No permission is granted to copy, distribute, modify, post or frame any text, graphics, or user interface design or logos.

Your LOGO

Your name area

1234 Main St, Nashua, NH 88888
Ph: (877) 999-3333
youremail@email.com

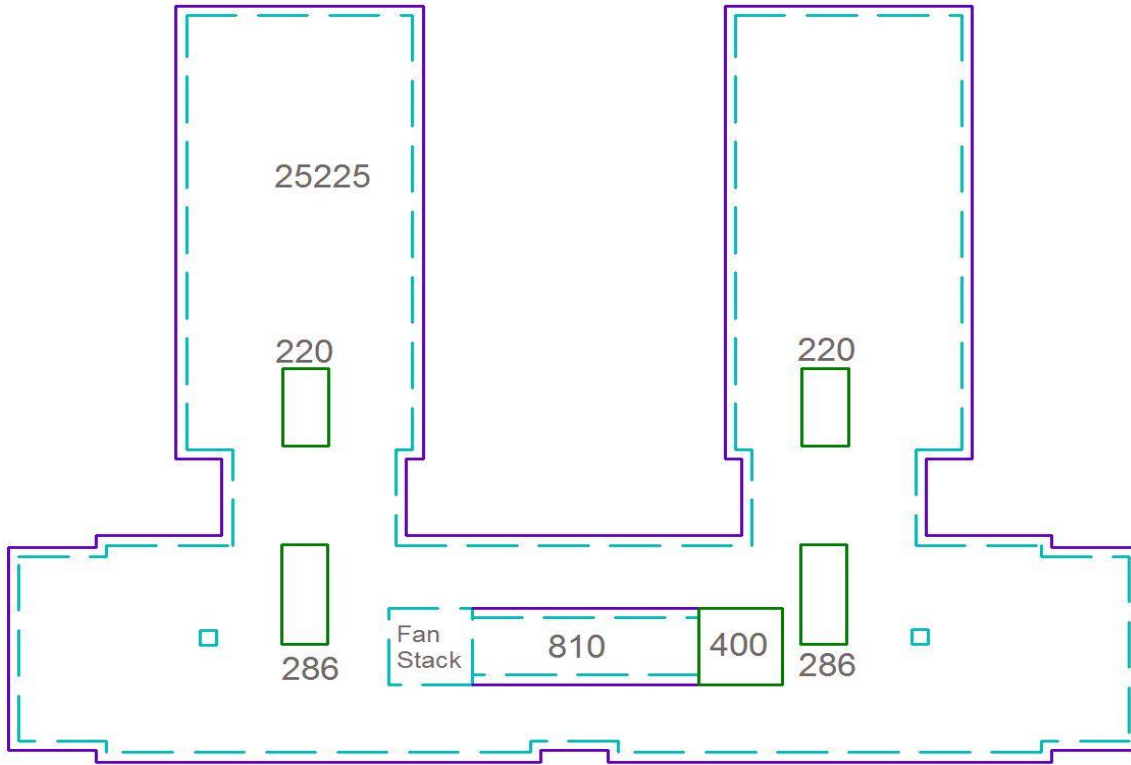
Roofing Report – Commercial

Order No.262

February 12, 2011

Customer Information: 888 North St., Customer City NH 76543

Area Measurements



Waste Factor Calculations

Total Area (Sqft)	32,983
5%	34632.15
10%	36,281
15%	37,930

Area measurements for facets have been rounded to the nearest square foot. Total square feet is actual facet measurements totaled and then rounded to nearest square foot.



All information and content on this report are subject to applicable statutes and regulations, furnished "as is", without warranty of any kind, express or implied, including but not limited to implied warranties of merchantability, fitness for a particular purpose, or non-infringement. The contents of this report are protected by applicable copyright laws. No permission is granted to copy, distribute, modify, post or frame any text, graphics, or user interface design or logos.

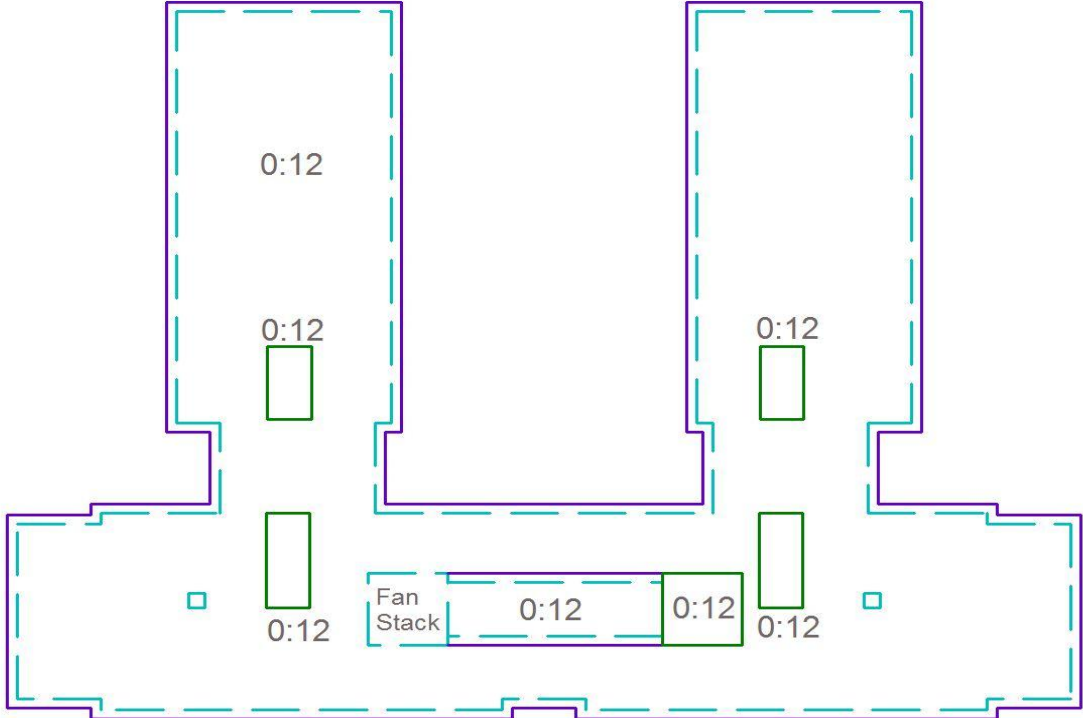


Your name area

1234 Main St, Nashua, NH 88888
Ph: (877) 999-3333
youremail@email.com

Customer Information: 888 North St., Customer City NH 76543

Pitch Values



All information and content on this report are subject to applicable statutes and regulations, furnished "as is", without warranty of any kind, express or implied, including but not limited to implied warranties of merchantability, fitness for a particular purpose, or non-infringement. The contents of this report are protected by applicable copyright laws. No permission is granted to copy, distribute, modify, post or frame any text, graphics, or user interface design or logos.

Your LOGO

Your name area

1234 Main St, Nashua, NH 88888

Ph: (877) 999-3333

youremail@email.com

Customer Information: 888 North St., Customer City NH 76543

Reporting Disclaimer

Aerialogics Aerial Measurement Reports are backed with a 100% Customer Satisfaction Guarantee. Based on our extensive testing, **Aerialogics** produces reports that are consistently accurate to within 1-2% of actual measurements. Our reports are produced using aerial images of structures and property that are digitized and then measured using highly calibrated software measurement tools.

Our quality controlled production methods meet an accuracy standard requiring aerial images to be of sufficient count and resolution. Our industry of aerial measurement services works within the reality a small percentage of structures across the U.S.A. and Canada, (more commonly in low-density, rural areas), do not have sufficient image count and/or resolution levels for producing an accurate measurement report. On occasion when a property's image data is sub-par or unavailable, we will promptly inform you, review available options you may have, and proceed with your project request according to your instructions.

**Thank you,
Aerialogics Support Team**